

FALL RIVER MILLS PLANNING UNIT

Pit-McCloud River Watershed

Existing Conditions & Uses

Overview

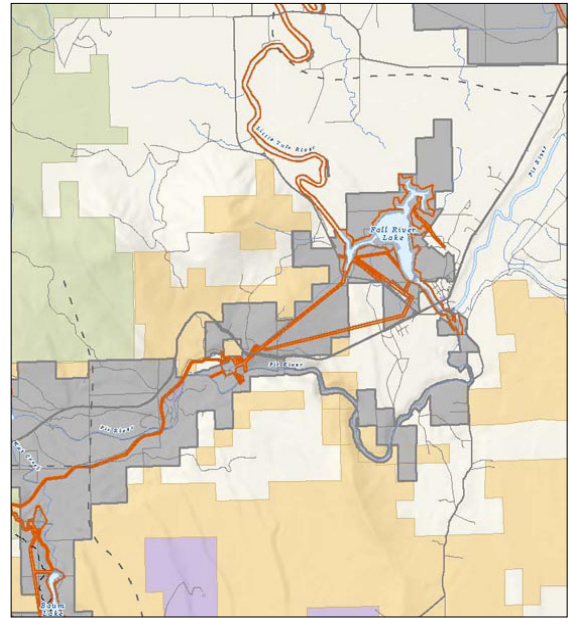
- Scenic lake and river corridor adjacent to the town of Fall River Mills; 5,310 acres in Shasta County
- 4,732 acres outside the FERC boundary; 578 acres inside the FERC boundary
- Part of Pit 1 Project (FERC #2687); New License issued March 2003

The Fall River Mills Planning Unit is located in Shasta County adjacent to the town of Fall River Mills. The planning unit contains Pit 1 Forebay, Fall River Pond, and several miles of the Fall and Pit River corridors and surrounding lands (see Figure PM-5). The Fall River flows into the 222-acre Pit 1 Forebay (also called Fall River Lake) and, below the forebay, the 0.7-mile long Fall River Pond, which are surrounded by the town of Fall River Mills.

The 6.7-mile section of the Pit River from the confluence with the Fall River to the Pit 1 Powerhouse is referred to as the Pit 1 bypass reach, as most of the Fall River waterflow into the Pit River is bypassed into the powerhouse. The Pit 1 bypass reach includes a slow moving,



Pit River near Pit 1 Powerhouse



Fall River Mills Planning Unit
Shasta County

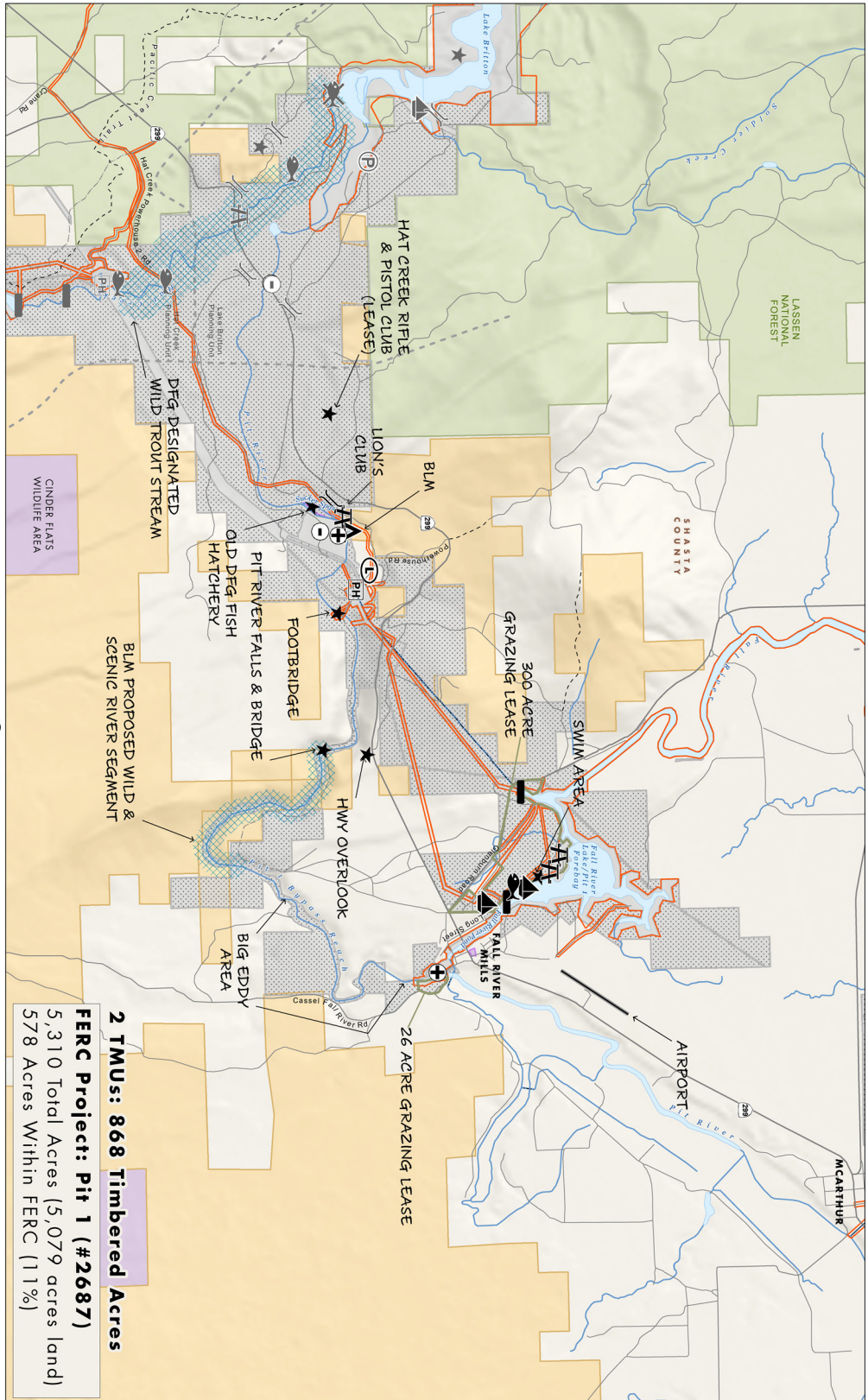
pond-like section called the Big Eddy, a canyon, and the Pit River Falls. The reach downstream of the Big Eddy is a fast moving, moderate gradient river confined within steep canyon walls. The Pit River slows and flattens past the powerhouse as it nears the confluence with Lake Britton in the Lake Britton Planning Unit.

The planning unit contains lands that are part of the Pit 1 Hydroelectric Project (FERC #2687) as well as infrastructure consisting of several dams and weirs in the Fall River Mills area, the Pit 1 Powerhouse downstream, and water conveyance structures supplying the powerhouse. The unit is primarily surrounded by private property and BLM land, with one U.S. Forest Service (USFS) parcel adjoining the western portion of the planning unit. In the Pit River bypass reach, a private lodge and a BLM campground are on lands adjacent to the planning unit. In addition to two grazing leases, there are leases within this planning unit for a rifle and pistol club, and a residential house in the town of Fall River Mills.

Fall River Mills Planning Unit Existing Conditions



- PG&E Lands Preliminary Designated for Retention
 - PG&E Lands Preliminary Designated for Disposition
 - BIA
 - BLM
 - BOR
 - DOD
 - NPS
 - Other/NGO
 - Federal Wilderness
 - Boat Launch
 - Campground
 - Fishing
 - Fish Barrier Dam
 - Lodging
 - Non-Motorized Boating
 - Parking
 - Powerhouse
 - Private Camp
 - Ranch
 - Trailhead
 - Whitewater PutIn/TakeOut
 - FERC Boundary
 - Stream / River
 - Canal / Ditch
 - Pipeline
 - Highly Valued Stream
 - Primary Roads
 - Secondary Roads
 - OHV Roads
 - Trail
- All symbols may not appear on the map



2 TMUs: 868 Timbered Acres
FERC Project: Pit 1 (#2687)
 5,310 Total Acres (5,079 acres land)
 578 Acres Within FERC (11%)

Figure PM-5

FALL RIVER MILLS PLANNING UNIT

Pit-McCloud River Watershed

Fish, Plant, and Wildlife Habitat

Due to the large amount of riparian habitat and presence of both rivers and impoundments within the planning unit, there are many aquatic species that inhabit the site, including both warm and coldwater fish species, mollusks, northwestern pond turtle, and Shasta crayfish. Northwestern pond turtles, a special status species, are found throughout the Fall River Pond and in three main groups within the Pit River in this planning unit. The endangered Shasta crayfish is found in two areas of the planning unit, Sucker Springs Creek and the Pit River. A former DFG fish hatchery at Sucker Springs Creek is currently being restored by the USFWS Shasta Crayfish Recovery Team to provide Shasta crayfish habitat.

The planning unit also provides extensive terrestrial habitat. There are three bald eagle nests within the planning unit, and wintering bald eagles have also been seen using the Pit River within this planning unit and at Pit 1 Forebay. Bank swallows can be seen in an area of cliffs at the Pit 1 Forebay. Five species of bats use the planning unit and its facilities for foraging and roosting. Due to the large number of avian species that use the greater Fall River Area and its importance in maintaining bird populations, the Audubon Society has designated this area as an Important Bird Area. One special status plant species has also been identified in the planning unit. The recent Pit 1 License Order requires several habitat measures and management plans.¹

Open Space

Due to a lack of development, steepness of the Pit River Canyon, and limited recreation facilities, open space values are found throughout the planning unit. Lands behind the town of Fall River Mills at the Pit 1 Forebay and Fall River Pond provide an open space area for the town. Lands along Highway 299 provide the viewshed for the highway and scenic overlook across from the Pit River Falls. A section of the Pit River from near the end of Big Eddy (beginning on BLM land) to the Pit River Falls has been

proposed by BLM as a Wild and Scenic River segment.

The Shasta County General Plan recognizes that rivers, creeks, and associated riparian corridors and floodplains within the county are major open space resources. The General Plan also recognizes that agricultural lands provide privately maintained open space, which contributes to both the rural character of the county and its open, natural landscape.

Outdoor Recreation

The majority of the planning unit's recreation facilities are located at the Pit 1 Forebay and Fall River Pond, adjacent to the town of Fall River Mills. At the forebay, facilities include a group picnic area, swim beach, boat ramp, and day use area. Facilities at Fall River Pond include a boat launch and picnic site. An Americans with Disabilities Act (ADA) accessible fishing platform and several other ADA facilities such as trails, parking, restrooms, and picnic tables are also provided. These sites were recently constructed or improved as a result of the Pit 1 License Order.

These lands and facilities serve as a community park for Fall River Mills and experience such issues as graffiti, off-highway vehicle (OHV) use, dumping, and vandalism. It is likely that PG&E will station a caretaker near the Pit 1 Forebay



Group picnic area at Pit 1 Forebay

FALL RIVER MILLS PLANNING UNIT

Pit-McCloud River Watershed



Cattle grazing near Pit 1 Forebay

Dam to reduce these problems. PG&E plans to clean up the site of a former trap shooting club at the Pit 1 Forebay. The recent Pit 1 License Order requires the development of two plans addressing recreation management as well as development and maintenance of recreation facilities.

There are few recreation facilities south of Fall River Pond. The Pit River Lodge (formerly owned by PG&E) is located at the Pit 1 Powerhouse, and a small day use area just downstream of the powerhouse has historically been managed by the Lion's Club for public use. In the same area, a BLM campground also provides whitewater boating access and day use facilities. As shown in Figure PM-5, the Hat Creek Rifle and Pistol Club leases land north of Highway 299, at the western end of the planning unit.

Whitewater boating access is available at a number of locations within this planning unit. The Pit 1 bypass reach and Pit River below the Pit 1 Powerhouse provide for two whitewater runs, one from Fall River Mills to the BLM campground near Pit 1 Powerhouse and one from the BLM campground to the Highway 299 bridge. PG&E has proposed a put-in site at Cassel Bridge in Fall River Mills to provide access to the first whitewater run; this would be the only formal recreation facility in the Pit 1 bypass reach. There has been little recorded use of the whitewater runs during yearly flushing flows (only 36 kayakers over several days in

the last three years). PG&E is investigating the provision of whitewater flows during the period of September 15 to October 30 as part of the Pit 1 License Order.²

Forest Resources

This planning unit contains 868 acres of timber within two PG&E Timber Management Units (TMUs). Forest resources consist of scattered second-growth pine stands, including Jeffrey and ponderosa pine, and do not include any plantations or late successional stands. The primary TMU within the planning unit (covering the Fall River Mills area west to about the Sucker Springs Creek area) is currently managed by PG&E under a Salvage prescription, meaning that management activities are restricted to mitigating for watershed and forest health issues, including emergency salvage harvesting following insect attack or a catastrophic event. A small area in the western portion of the planning unit is managed for Multiple-Uses, meaning that protection and uses of other resources and facilities may preclude sustained timber management as the highest and best use of portions of the TMU.

Agricultural Uses

Currently, two grazing leases exist within the Fall River Mills area. The first is a 300-acre grazing lease on the southwestern side of Pit 1 Forebay



Pit River Canyon near Pit 1 Powerhouse

FALL RIVER MILLS PLANNING UNIT

Pit-McCloud River Watershed

for 33 head of cattle. Cattle are allowed to graze at the forebay during the late spring and part of the fall to control yellow starthistle in recreation areas. The second grazing lease is a 26-acre lease for two horses on the east side of the Pit River near the confluence with the Fall River. There was a third lease along the north and east side of the Pit 1 Forebay for cattle grazing from April to July; however, the lease was terminated due to death of the lessee. As part of the relicensing for the adjacent Hat Creek Project, a grazing lease that extended from the Pit 1 Powerhouse to and along Hat Creek was terminated in 2001.



Pit River Falls

Historic Resources

There are a number of cultural resources within this planning unit including many sites around the Pit 1 Forebay and along the Pit 1 bypass reach. This area is within the ancestral territory of the Pit River Tribe, specifically the Ajumawi and Illmawi bands of the tribe. At least two major settlement areas, the villages of Wennehahle and Dawchtahpit, are known to be present in the canyon along with a resource procurement place and several potential Traditional Cultural Properties that are important spiritually. In addition, the Pit 1 Hydroelectric Project has been recommended as eligible for the National Register of Historic Places (NRHP) as an historic district. The recent License Order for the Pit 1 Project required the development of a Pit 1 Historic Properties Management Plan (HPMP) to manage cultural resources.

Stewardship Council Recommendations

The Stewardship Council recommends that the land and land uses at the Fall River Mills Planning Unit be preserved and enhanced by focusing on the importance of the recreation facilities to the local community as well as the special habitat values and species within the planning unit. In presenting the Recommended Concept provided here, our objective is to

protect and enhance habitat resources while maintaining existing recreation use and enhancing the quality of the recreation experience.

Objective: Preserve and enhance biological, agricultural and cultural resources, as well as enhance recreation opportunities and sustainable forestry management.

As shown in Table PM-3, the Stewardship has identified a number of preservation and/or enhancement measures that may contribute to the conservation management program for the Fall River Mills Planning Unit. Additional detail and background regarding these potential measures can be found in the Supporting Analysis for Recommendations, provided under separate cover. These measures are intended to be illustrative in nature, not prescriptive, and will be amended, deleted, or augmented over time in coordination with future land owners and managers to best meet the objective for this planning unit.

FALL RIVER MILLS PLANNING UNIT

Pit-McCloud River Watershed

Fish, Plant, and Wildlife Habitat

Objective: Preserve and enhance habitat in order to protect special biological resources.

The Falls River Mills Planning Unit is known to contain important habitat for several aquatic and terrestrial special status species. In order to preserve and enhance the habitat and resources found here, the Stewardship Council recommends that baseline studies be developed to gain a clear understanding of the resources (particularly outside the FERC boundary where little information is available). These studies will likely be followed by management plans to ensure implementation of preservation and enhancement measures for specific resources. Management of the property to preserve and enhance habitat will also include addressing noxious weeds. Other recommended measures emphasize control of vehicle access and restoration of areas damaged by unauthorized OHV use, monitoring of shoreline use, Shasta crayfish interpretive programs, and ensuring adequate care of a shooting club's lease site. Coordination with Pit 1 Project plans, ongoing Shasta Crayfish habitat restoration at the former fish hatchery, and with Native American entities regarding restoration in sensitive cultural resource areas, is also anticipated.



Road at Pit 1 Forebay

Open Space

Objective: Preserve open space in order to protect natural and cultural resources, viewsheds, agricultural land uses, and the recreation setting.

The lands within the planning unit comprise a large portion of the open space viewsheds for the Falls River Mills community, for travelers on Highway 299, and for visitors to adjacent camping and lodge facilities. This concept would preserve open space through permanent conservation easements and would enhance the viewshed by working with PG&E to reduce graffiti on the Pit 1 Forebay Dam. Conservation easements would describe all prohibited uses to maintain open space values, including the level of uses allowed and the requirement to maintain scenic qualities.

Outdoor Recreation

Objective: Enhance recreational facilities in order to provide additional recreation opportunities.

The Falls River Mills Planning Unit provides many of the most popular recreation facilities used by residents of the Falls River Mills community, and provides the potential for new and enhanced recreation experiences near that community and at other more remote locations. As shown in Figure PM-6, the Stewardship Council looks to enhance these opportunities by recommending evaluation of opportunities to expand and improve community park developments and enhance recreation opportunities within the Pit 1 bypass reach. We recommend enhancements focused on providing parking and trail facilities in the Pit 1 Powerhouse area, increasing opportunities for youth education and recreation, and enhancing ADA accessibility. The Stewardship Council also recommends evaluating opportunities to support community park development by the Fall River Weir and evaluating the safety of the Pit River Falls Bridge in conjunction with the Fort Crook Historical Society. Recreation enhancements should be

FALL RIVER MILLS PLANNING UNIT

Pit-McCloud River Watershed

coordinated with the BLM, adjacent landowners, and Pit 1 Project plans.

Sustainable Forestry

Objective: Develop and implement forestry practices in order to contribute to a sustainable forest, preserve and enhance habitat, as well as to ensure appropriate fuel load and fire management.

The Fall River Mills Planning Unit contains nearly 900 acres of timberland, primarily managed for salvage only rather than sustained timber production. Due to the proximity of the town of Fall River Mills and other factors, management of fuel loads and wildfires have special importance. The Stewardship Council recommends that future care and management of the land include developing a long-term vision for forest management in the area, addressing silvicultural practices, holistic watershed management, fuels management, and fire management and response. The fire management and response, forest, and fuels management plans should be developed in conjunction with the noxious weed, rangeland, and wildlife and habitat management plans, as well as relevant Pit 1 Project plans. We expect that all of these plans would be developed in coordination with adjacent landowners, lessees, and BLM management and practices as appropriate.

Agricultural Uses

Objective: Preserve and enhance grazing in order to support associated economic benefits, as well as to protect open space and habitat resources.

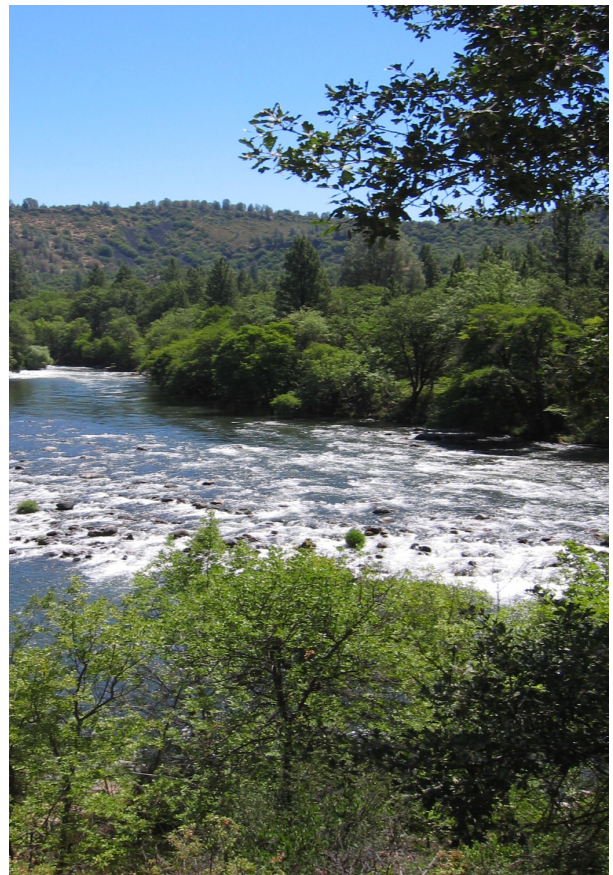
There are currently two grazing leases within the planning unit. The Stewardship Council looks to preserve this important economic use as part of the long-term management of the Fall River Mills Planning Unit. To support this effort, we anticipate a baseline conditions report

will be required to describe current agricultural, physical, and overall biological conditions of the area, as well as to assess the potential for the reintroduction of additional grazing opportunities. From this, specific determinations can be made to identify and manage grazing practices in balance with other uses and values of the property.

Preservation of Historic Values

Objective: Identify and manage cultural resources in order to ensure their protection.

The Fall River Mills Planning Unit is known to contain important Native American cultural resources and historical resources related to hydropower development, and there is a high likelihood additional cultural resources are present. The Stewardship Council aims to support an increased understanding of these resources and ensure they are appropriately



Pit River near the BLM Campground

FALL RIVER MILLS PLANNING UNIT

Pit-McCloud River Watershed

protected. To meet this objective, we recommend that cultural resource studies be conducted to understand the resources within the unit (particularly outside the FERC cultural resource study area, where less information is available), and that appropriate plans be developed and implemented. A specific recommendation is also made to determine potential noise impacts from the Hat Creek Rifle and Pistol Club on Native American traditional cultural resource practices in the area. This measure should be coordinated with the club and any other potentially affected parties. Throughout this effort, the Council recommends close coordination with Native American entities. Development of the cultural resources management plan should be consistent with the Final Pit 1 HPMP.

Endnotes

¹ Pit 1 License Order habitat-related measures include monitoring of Shasta crayfish and bald eagles, minimum flows, flushing flows, development of a Shasta Crayfish Technical Review Committee, bat surveys, and recording of incidental observations of peregrine falcons. A number of plans are also required in the License Order including a Shasta crayfish management plan, vegetation management plan, foothill yellow-legged frog protection plan, and northwestern pond turtle protection plan.

² A fish stranding study and further refinement of acceptable whitewater boating flows are proposed in a Phase 2 study on the impacts of potential whitewater boating flows.

Table PM-3 Objectives to Preserve and/or Enhance – Recommended Concept

Planning Unit Objective: Preserve and enhance biological, agricultural and cultural resources, as well as enhance recreation opportunities and sustainable forestry management.		
Beneficial Public Value	Objective	Potential Measures to Preserve and/or Enhance BPVs – Not Requirements*
Protection of the Natural Habitat of Fish, Wildlife, and Plants	Preserve and enhance habitat in order to protect special biological resources.	<ul style="list-style-type: none"> • Conduct surveys of lands outside the FERC boundary to identify biological resources and enable their protection. • Develop a noxious weed management plan for lands outside the FERC boundary consistent with the Pit 1 Project Vegetation Management Plan. • Close vehicular access; provide walk-in only access to east side of the Pit 1 Forebay.** • Restore unauthorized OHV roads, closed roads, and other damaged areas around the Pit 1 Forebay. • Monitor shoreline vegetation by the group picnic area at the Pit 1 Forebay.** • Coordinate with Sucker Springs Creek Shasta crayfish habitat restoration efforts and provide interpretive programs on Shasta crayfish at the restoration site.** • Require regular clean-up of debris at the Hat Creek Rifle and Pistol Club.** • Develop a wildlife and habitat management plan for the planning unit.
Preservation of Open Space	Preserve open space in order to protect natural and cultural resources, viewsheds, agricultural land uses, and the recreation setting.	<ul style="list-style-type: none"> • Apply permanent conservation easements to ensure a higher level of open space protection. • Work in partnership with PG&E to explore ways to eliminate graffiti on the Pit 1 Forebay Dam.**
Outdoor Recreation by the General Public	Enhance recreational facilities in order to provide additional recreation opportunities.	<ul style="list-style-type: none"> • Assess the potential for youth program opportunities. • Evaluate opportunities to support community park development by the Fall River Weir.** • Enhance usability of the ADA fishing platform at the Pit 1 Forebay.** • Provide trash facilities and parking at the Pit 1 Powerhouse.** • Formalize a trail from the Pit 1 Powerhouse to the footbridge with signage and benches.** • Assess the potential for a trail along the Pit River from the footbridge to Pit River Falls and from the Pit 1 Powerhouse to the BLM campground.** • Work with the Fort Crook Historical Society to evaluate safety of the bridge by Pit River Falls.**
Sustainable Forestry	Develop and implement forestry practices in order to contribute to a sustainable forest, preserve and enhance habitat, as well as to ensure appropriate fuel load and fire management.	<ul style="list-style-type: none"> • Evaluate existing timber inventory data and supplement as appropriate. • Develop a forest management plan for the planning unit to promote natural forest development and structural and physical diversity in forests for long-term ecological, economic, social, and cultural benefits. • Develop a fuels management plan for the planning unit to ensure long-term forest health and reduce fuel loading and fire hazard. • Develop a fire management and response plan for the planning unit to ensure fire preparedness.
Agricultural Uses	Preserve and enhance grazing in order to support associated economic benefits, as well as to protect open space and habitat resources.	<ul style="list-style-type: none"> • Develop a baseline conditions report that describes current agricultural, physical, and overall biological conditions of the area, including current uses and state of improvement. • Develop a rangeland management plan for grazing use that includes goals and objectives and a monitoring and adaptive management strategy, and specifies grazing practices that address soil and water conservation, erosion control, pest management, nutrient management, vegetation management, habitat protection, and cultural resources management. • Evaluate the potential for additional grazing opportunities within the planning unit.
Preservation of Historic Values	Identify and manage cultural resources in order to ensure their protection.	<ul style="list-style-type: none"> • Conduct surveys outside the FERC Project APE to identify cultural resources and enable their protection. • Conduct an ethnographic study of lands outside the FERC Project APE to identify traditional use areas. • Develop a cultural resources management plan for lands outside the FERC Project APE consistent with the Pit 1 Project Programmatic Agreement. • Determine potential noise impacts from the Hat Creek Rifle and Pistol Club on Stewardship Council BPVs.** • Coordinate with Native American entities when conducting cultural resource measures.

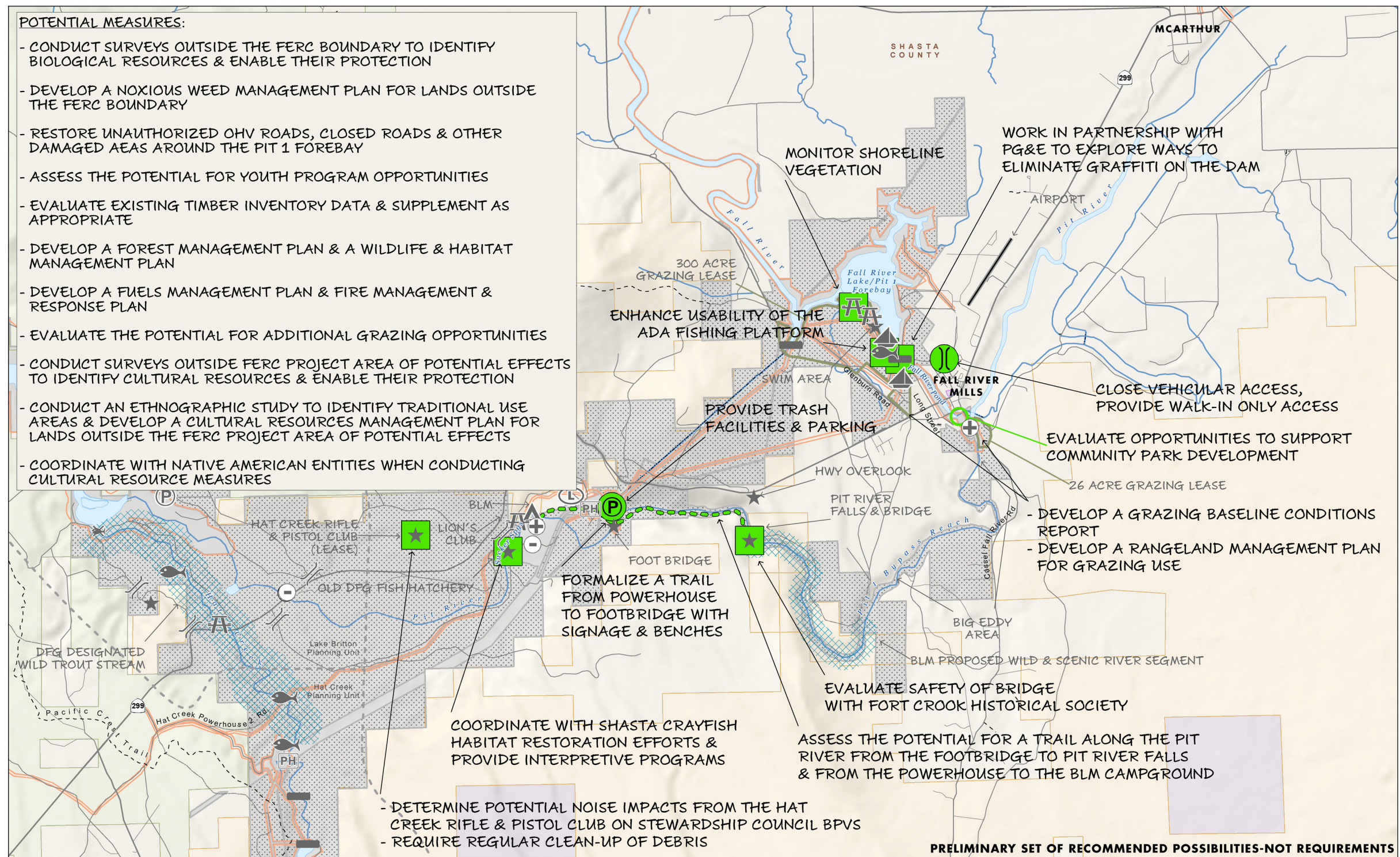
* This is a set of recommended possibilities for the preservation and enhancement of BPV's, and is not intended to be a set of requirements for future land management.

** Denotes site specific measure.

FALL RIVER MILLS PLANNING UNIT

Pit-McCloud River Watershed

Fall River Mills Planning Unit
 Recommended Concept



- POTENTIAL MEASURES:**
- CONDUCT SURVEYS OUTSIDE THE FERC BOUNDARY TO IDENTIFY BIOLOGICAL RESOURCES & ENABLE THEIR PROTECTION
 - DEVELOP A NOXIOUS WEED MANAGEMENT PLAN FOR LANDS OUTSIDE THE FERC BOUNDARY
 - RESTORE UNAUTHORIZED OHV ROADS, CLOSED ROADS & OTHER DAMAGED AREAS AROUND THE PIT 1 FOREBAY
 - ASSESS THE POTENTIAL FOR YOUTH PROGRAM OPPORTUNITIES
 - EVALUATE EXISTING TIMBER INVENTORY DATA & SUPPLEMENT AS APPROPRIATE
 - DEVELOP A FOREST MANAGEMENT PLAN & A WILDLIFE & HABITAT MANAGEMENT PLAN
 - DEVELOP A FUELS MANAGEMENT PLAN & FIRE MANAGEMENT & RESPONSE PLAN
 - EVALUATE THE POTENTIAL FOR ADDITIONAL GRAZING OPPORTUNITIES
 - CONDUCT SURVEYS OUTSIDE FERC PROJECT AREA OF POTENTIAL EFFECTS TO IDENTIFY CULTURAL RESOURCES & ENABLE THEIR PROTECTION
 - CONDUCT AN ETHNOGRAPHIC STUDY TO IDENTIFY TRADITIONAL USE AREAS & DEVELOP A CULTURAL RESOURCES MANAGEMENT PLAN FOR LANDS OUTSIDE THE FERC PROJECT AREA OF POTENTIAL EFFECTS
 - COORDINATE WITH NATIVE AMERICAN ENTITIES WHEN CONDUCTING CULTURAL RESOURCE MEASURES

<ul style="list-style-type: none"> PG&E Lands Preliminarily Designated for Retention PG&E Lands Preliminarily Designated for Disposition BIA BLM BOR State NPS Other/NGO Federal Wilderness 	<p>Concept Features</p> <ul style="list-style-type: none"> Modify Existing Feature New Feature Trail 	<p>Existing Features</p> <ul style="list-style-type: none"> Boat Launch Campground Dam Day Use Feature of Importance Fishing Fish Barrier Dam Gate Lodging Non-Motorized Boating 	<ul style="list-style-type: none"> Parking Powerhouse Private Camp Ranch Trailhead Whitewater Put-In/Take-Out 	<ul style="list-style-type: none"> FERC Boundary Stream / River Canal / Ditch Pipeline Highly Valued Stream Primary Roads Secondary Roads OHV Roads Trail
--	--	---	---	--

All symbols may not appear on the map



Figure PM-6
PM-28 LCP Volume II

Fall River Mills Planning Unit

Fish, Plant, and Wildlife Habitat

Potential Measure:

- *Conduct surveys of lands outside the FERC boundary to identify biological resources and enable their protection.*

It is likely that relicensing studies for the Pit 1 Project only focused on areas within the FERC boundary. Some surveying and monitoring is occurring in river reaches not included within the FERC boundary; however, the planning unit contains additional habitat apart from river reaches outside the FERC boundary. Therefore, to enhance knowledge of biological resources throughout the planning unit, the Stewardship Council recommends conducting surveys of lands outside the FERC boundary to identify biological resources and enable their protection.

Potential Measure:

- *Develop a noxious weed management plan for lands outside the FERC boundary consistent with the Pit 1 Project Vegetation Management Plan.*

The License-required Pit 1 Project Vegetation Management Plan describes briefly the treatment of noxious weeds. As this plan only applies to lands within the FERC boundary, there is currently no management of noxious weeds outside the FERC boundary. To protect native species, the Stewardship Council recommends developing a noxious weed management plan for lands outside the FERC boundary consistent with the Pit 1 Project Vegetation Management Plan. Development of the noxious weed management plan should be coordinated with existing PG&E noxious weed efforts, and the wildlife and habitat management plan, fuels management plan, and forest management plan.

Potential Measures:

- *Close vehicular access; provide walk-in only access to east side of the Pit 1 Forebay.*
- *Restore unauthorized OHV roads, closed roads, and other damaged areas around the Pit 1 Forebay.*

On a field visit, it was noted that there were several off-highway vehicle (OHV) roads, and some other larger bare ground areas, that appeared to be damaged from recreation use on the east side of Pit 1 Forebay. The east side of the forebay is the viewshed for the extensive recreation facilities on the west side of the forebay. Additionally, there are several cultural sites on the east side of the forebay that are potentially being impacted from unauthorized OHV use. The Stewardship Council recommends closing vehicular access to the east side of the forebay through installation of a gate and providing walk-in access only. This approach could reduce unauthorized OHV use and associated impacts to habitat and cultural resources. In conjunction, the Stewardship Council also recommends restoring unauthorized OHV roads, closed roads, and other damaged areas around the Pit 1 Forebay, in a manner that minimizes impacts to cultural resources. Roads on the west side of the forebay beyond the group picnic area have been closed, but may still provide facilities for unauthorized OHV use. Restoring these closed roads, along with unauthorized OHV roads and damaged areas on the east side of the forebay, would help restore habitat, reduce attractive nuisance for unauthorized OHV use, reduce possible damage to

cultural sites, and enhance the viewshed from the backside of town and the west side of the forebay.

Potential Measure:

- *Monitor shoreline vegetation by the group picnic area at the Pit 1 Forebay.*

A group picnic area was recently created at the Pit 1 Forebay. It appears that users of the picnic area are entering the forebay, as evidenced by patches of missing shoreline vegetation near the picnic area. A swimming area is provided just south of the picnic area. The Stewardship Council recommends monitoring shoreline vegetation at the group picnic area to determine if management of shoreline access is needed.

Potential Measure:

- *Coordinate with Sucker Springs Creek Shasta crayfish habitat restoration efforts and provide interpretive programs on Shasta crayfish at the restoration site.*

A major restoration project is occurring within the planning unit to restore Shasta crayfish habitat in Sucker Springs Creek. According to the Recovery Plan for the Shasta Crayfish, the Sucker Springs Creek population of Shasta crayfish has been isolated from the Fall River and Hat Creek populations for over 80 years and likely represents a unique gene pool. PG&E is currently funding the habitat restoration project, which focuses on eliminating signal crayfish in the creek and removing dams associated with the old hatchery. To continue endangered species protection efforts within the planning unit, the Stewardship Council recommends coordinating with Sucker Springs Creek Shasta crayfish habitat restoration efforts. The Stewardship Council also recommends providing interpretive programs regarding the Shasta crayfish at the restoration site to encourage further public support for restoration and protection of this species. Interpretive programs should be coordinated with restoration efforts and only commence when appropriate based on restoration work.

Potential Measure:

- *Require regular clean-up of debris at the Hat Creek Rifle and Pistol Club.*

The Hat Creek Rifle and Pistol Club is located on leased land north of Highway 299, just east of the Pit River bridge on Highway 299. The club is very popular and thus produces considerable shooting debris. Currently, brass prices have made clean-up worthwhile; however, clean-up is not believed to be conducted on a consistent basis. To improve habitat and prevent contamination, the Stewardship Council recommends requiring regular clean-up of debris at the Hat Creek Rifle and Pistol Club.

Potential Measure:

- *Develop a wildlife and habitat management plan for the planning unit.*

The Fall River Mills Planning Unit provides habitat for a variety of species, including many special status species such as northwestern pond turtles, bald eagles, and Shasta crayfish. Additionally, the planning unit may provide several opportunities for restoration. To provide a comprehensive vision for habitat protection and enhancement within the planning unit, the Stewardship Council recommends creating a wildlife and habitat management plan. Once recommended biological resource surveys are completed, potential habitat enhancements can be identified and developed into a comprehensive plan describing goals and objectives for habitat and species, as well as measures needed to enhance and protect habitat for plant and wildlife

species. Monitoring of species and/or habitats would also be developed as a component of the plan. The wildlife and habitat management plan should be developed in conjunction with the noxious weed, forest, and fuels management plans as well as habitat enhancement and protection measures already described herein. The wildlife and habitat management plan should also be consistent with relevant Pit 1 Project plans.

Open Space

Potential Measure:

- *Apply permanent conservation easements to ensure a higher level of open space protection.*

The Stewardship Council recommends preserving open space values through permanent conservation easements. Conservation easements would describe all prohibited uses to maintain open space values, including the level of uses allowed. Recommendations include only minor recreation development and are not expected to decrease the scenic quality of the viewsheds.

Potential Measure:

- *Work in partnership with PG&E to explore ways to eliminate graffiti on the Pit 1 Forebay Dam.*

Currently, there is graffiti along the north side of the Pit 1 Forebay Dam. The Stewardship Council recommends working in partnership with PG&E to explore ways to eliminate graffiti on the Pit 1 Forebay Dam face. Whether it is murals, other artwork, or a plain dam face, reducing graffiti on the dam would benefit the recreational users of the area as well as enhance the open space viewshed.

Outdoor Recreation

Potential Measure:

- *Assess the potential for youth program opportunities.*

There are great opportunities within the planning unit for youth to learn about species such as bald eagles, northwestern pond turtles, and bank swallows, and their habitats; geomorphology; water quality and water management; and grazing. Therefore, the Stewardship Council recommends assessing the potential for youth program opportunities within the planning unit. Additionally, facilities located within the planning unit could provide staging areas for youth programs, including the old Fall River Mills library building, an old PG&E warehouse.

Potential Measure:

- *Evaluate opportunities to support community park development by the Fall River Weir.*

There is local interest in creating a community park near the old feed mill site in Fall River Mills (not within the planning unit), which is surrounded by planning unit lands. Planning unit lands near the old feed mill may not be an ideal site for a community park due to topography and sensitive habitat; however, a park could be located at the site of the old mill where there is adequate space for park facilities. A park on this site would offer views of both the Pit 1 bypass reach and the Fall River, and benefit the community and recreation use within the area. While development of a community park may require planning unit lands and the access that they

provide to the old mill site, the Stewardship Council recommends evaluating opportunities to support community park development at this site.

Potential Measure:

- *Enhance usability of the ADA fishing platform at the Pit 1 Forebay.*

Recently, an Americans with Disabilities Act (ADA) fishing access site was created at the Pit 1 Forebay just north of the forebay dam. The site includes parking, restroom, picnic table, and ADA fishing platform. The platform was installed several feet away from the water's edge and thus it will be difficult to fish from the platform. Therefore, to enhance the fishing experience, the Stewardship Council recommends enhancing the usability of the ADA fishing platform. Potential options to enhance usability may include extending the platform or moving the platform, but need to be further evaluated.

Potential Measures:

- *Provide trash facilities and parking at the Pit 1 Powerhouse.*
- *Formalize a trail from the Pit 1 Powerhouse to the footbridge with signage and benches.*

Though the Pit 1 Project has been recently relicensed and many recreation sites are being improved, there are still opportunities to enhance the recreation experience around the Pit 1 Powerhouse. Anglers and Pit River Lodge visitors are the primary users of the Pit 1 Powerhouse area. Currently, there are user-created trails from the Pit 1 Powerhouse to a footbridge over the Pit River, as well as trails along an old road that continues from the footbridge upstream through the Pit 1 bypass reach. Though use at the Pit 1 Powerhouse is not high, it would be beneficial to offer some formal facilities to ensure safety, protect habitat, and enhance the recreation experience for those that do use the powerhouse area. The Stewardship Council recommends providing trash and parking facilities at the powerhouse and formalizing a trail from the powerhouse to the footbridge, which would include signage and benches overlooking the river for visitors to enjoy the natural setting of the Pit 1 bypass reach. These measures would concentrate use to protect habitat as well as provide a safe way for visitors to access and enjoy the Pit 1 bypass reach. Disturbance to bald eagles should be considered when developing and siting recommended facilities. In addition, new facilities should be consistent with the Final Pit 1 Historic Properties Management Plan (HPMP).

Potential Measure:

- *Assess the potential for a trail along the Pit River from the footbridge to Pit River Falls and from the Pit 1 Powerhouse to the BLM campground.*

The Stewardship Council also recommends assessing the potential for a non-motorized trail along the Pit River from the footbridge upstream to Pit River Falls and from the Pit 1 Powerhouse downstream to the BLM campground. Currently, there is an old road along the river to the falls that could be used as a trail alignment. However, safety from rockfall could be an issue; therefore, providing a trail to the falls needs further investigation. Additionally, a trail through this area may affect other sensitive resources and impacts to other resources would need to be identified. A trail from the powerhouse to the campground would provide a non-motorized connection between recreation sites; however, the trail alignment would need to be further investigated as private property may need to be crossed, and cooperation and an easement with the Pit River Lodge would therefore be necessary. In addition, bald eagles are known to use the Pit River in the area where trails are recommended. Potential trail impacts to bald eagles would

need to be evaluated, especially since both nearby nesting bald eagle pairs have recently moved their nests away from the shore.

If a trail to the Pit River Falls is found to be safe and feasible, opportunities to provide interpretive information along the trail should be evaluated. Development of either trail should be consistent with the Final Pit 1 HPMP. Additionally, if such trails are created, the trails should be included in an appendix (non-jurisdictional) to the existing Pit 1 Project Recreation Plan to ensure long-term management, maintenance, and monitoring of use of the recommended trails, as well as consistent interpretation and education facilities both within and outside the FERC boundary.

Potential Measure:

- *Work with the Fort Crook Historical Society to evaluate safety of the bridge by Pit River Falls.*

The Stewardship Council also recommends evaluating the safety of a bridge along the old road in the bypass reach. The safety of the bridge near Pit River Falls has been raised as an issue. Boaters in the bypass reach may portage around the Pit River Falls, and it is unknown if they walk across the bridge. The Stewardship Council recommends working with the Fort Crook Historical Society (owner of the bridge) to evaluate the safety of the bridge by Pit River Falls to determine what to do with the bridge, especially if the recommended trail to the falls is feasible and safe.

Sustainable Forestry

Potential Measures:

- *Evaluate existing timber inventory data and supplement as appropriate.*
- *Develop a forest management plan for the planning unit to promote natural forest development and structural and physical diversity in forests for long-term ecological, economic, social, and cultural benefits.*

The planning unit currently contains two PG&E Timber Management Units (TMUs) that are managed for multiple uses and emergency salvage operations; however, there is no overall documented vision for these TMUs. Therefore, the Stewardship Council recommends developing a forest management plan for the planning unit through the evaluation of existing forest inventory data and supplemental information, when appropriate. In addition to supporting natural forest development, the forest management plan would promote holistic watershed management, supporting the enhancement of other BPVs over the long term. As this is an area mostly managed under the salvage prescription, snags and downed woody debris would be maintained in the planning unit when not deemed a safety, fire, or disease hazard as they are important components for wildlife habitat and forest regeneration. Development of the forest management plan should be coordinated with development of the wildlife and habitat, noxious weed, and fuels management plans as well as relevant Pit 1 Project plans.

Potential Measure:

- *Develop a fuels management plan for the planning unit to ensure long-term forest health and reduce fuel loading and fire hazard.*

Due to the location of the planning unit adjacent to and within the town of Fall River Mills and the presence of rural residential and commercial development nearby, reduction of fuels within the planning unit is important. Therefore, the Stewardship Council recommends developing a fuels management plan for the planning unit to ensure long-term forest health and reduce fuel loading and fire hazard. This plan would address fuels reduction, special status species' requirements, and watershed protection.

Potential Measure:

- *Develop a fire management and response plan for the planning unit to ensure fire preparedness.*

As previously mentioned, the planning unit includes lands surrounding and within the town of Fall River Mills, as well as lands adjacent to or near other rural residential and commercial developments. The planning unit also contains recreation facilities that receive use during certain times of the year. Therefore, the Stewardship Council recommends a fire management and response plan to outline appropriate actions to take when a fire occurs and reporting procedures which would be useful for the community and site hosts within the planning unit and on adjacent lands (BLM campground host). Such a plan would increase fire preparedness and enhance fire prevention.

Agricultural Uses

Potential Measure:

- *Develop a baseline conditions report that describes current agricultural, physical, and overall biological conditions of the area, including current uses and state of improvement.*

There are currently two grazing leases within the planning unit: one for 300 acres of cattle grazing on the west side of the Pit 1 Forebay and one for 26 acres of horse grazing near the Pit River Weir. It is unknown if range assessments have been done for the planning unit and whether or not appropriate grazing practices are being used by both lessees. Thus, the Stewardship Council recommends developing a baseline conditions report that describes current agricultural, physical, and overall biological conditions of the area, including current uses and state of improvement. This report would help determine appropriate grazing practices, regime, and management.

Potential Measure:

- *Develop a rangeland management plan for grazing use that includes goals and objectives and a monitoring and adaptive management strategy, and specifies grazing practices that address soil and water conservation, erosion control, pest management, nutrient management, vegetation management, and habitat protection.*

Once the recommended baseline conditions report is completed, the Stewardship Council recommends developing a rangeland management plan for grazing use that includes goals and objectives and a monitoring and adaptive management strategy, and specifies grazing prescriptions that may address topics including soil and water conservation, erosion control, pest management, nutrient management, vegetation management, habitat protection, and cultural resources management. This plan would ensure that grazing use within the planning unit meets Stewardship Council policy for agricultural uses on Watershed Lands. To ensure consistency and

complementary measures, the rangeland management plan should be developed to be consistent with the recommended noxious weed management plan for lands outside the FERC boundary as well as the Pit 1 Project Vegetation Management Plan.

Potential Measure:

- *Evaluate the potential for additional grazing opportunities within the planning unit.*

There were formerly two other grazing leases within the planning unit, one along the Pit River west of the Pit 1 Powerhouse and one for the north and east sides of the Pit 1 Forebay. The Stewardship Council recommends evaluating the potential for additional grazing opportunities within the planning unit. Former grazing areas could be reviewed for potential reintroduction of grazing including whether or not grazing is an appropriate use in these areas, impacts to other resources, and whether or not a qualified lessee could be identified. If grazing is found to be an appropriate use of these areas, then a baseline conditions report would be prepared and a rangeland management plan developed.

Preservation of Historic Values**Potential Measures:**

- *Conduct surveys outside the FERC Project APE to identify cultural resources and enable their protection.*
- *Coordinate with Native American entities when conducting cultural resource measures.*

PG&E conducted several cultural resource studies within the Pit 1 Project Area of Potential Effects (APE). Additionally, as part of the Programmatic Agreement for the Pit 1 Project, PG&E was required to conduct an archaeological survey of the Pit 1 bypass reach. There is a high likelihood of cultural sites within the planning unit outside the APE and Pit 1 bypass reach; thus, the Stewardship Council recommends conducting surveys outside the Pit 1 Project APE (excluding already surveyed portions) to identify cultural resources and enable their protection. Documentation of cultural sites should be coordinated with Native American entities.

Potential Measures:

- *Conduct an ethnographic study of lands outside the FERC Project APE to identify traditional use areas.*
- *Coordinate with Native American entities when conducting cultural resource measures.*

There are many cultural resources within this planning unit, as well as the potential for the presence of traditional plants or for the cultivation of plants traditionally used by Native Americans. To increase traditional use of this area, the Stewardship Council recommends conducting an ethnographic study of lands outside the Pit 1 Project APE to identify traditional use areas, including areas traditionally used for plant gathering. The ethnographic study should be coordinated with Native American entities.

Potential Measures:

- *Develop a cultural resources management plan for lands outside the FERC Project APE consistent with the Pit 1 Project Programmatic Agreement.*
- *Coordinate with Native American entities when conducting cultural resource measures.*

Assuming that the recommended surveys and ethnographic study identify cultural sites and traditional use areas within the planning unit, the Stewardship Council recommends developing a cultural resources management plan for lands outside the Pit 1 Project APE to ensure that cultural resources are provided adequate protection in the future. The plan would include appropriate measures for the identification, evaluation, and treatment of cultural resources (archaeological and historical), as well as traditional use areas. Treatment measures could include avoidance, specific protective measures (e.g., fencing), site monitoring, and methods to preserve, restore, or enhance cultural resource values through conservation easements, management agreements, or through public interpretation and education programs. Development of the cultural resources management plan should be consistent with the Final Pit 1 HPMP and should be coordinated with Native American entities.

Potential Measures:

- *Determine potential noise impacts from the Hat Creek Rifle and Pistol Club on Stewardship Council BPVs.*
- *Coordinate with Native American entities when conducting cultural resource measures.*

The Hat Creek Rifle and Pistol Club has leased land north of Highway 299 near the western edge of the planning unit since 1980. Many events are held at the club and membership is over 200 people. It is possible that activities at the club could interrupt Native American ceremonies, recreation uses and wildlife on surrounding lands. As a result, the Stewardship Council recommends determining how noise may be impacting Stewardship Council BPVs such as habitat protection, historic preservation and outdoor recreation. Should an impact area be identified, the activities at the club could be coordinated with Native American entities so that shooting use does not interfere with ceremonies that take place within the impact area or noise dampening measures could be used to decrease impacts to adjacent recreation use or wildlife. Determination of noise impacts should be coordinated with the club and any other potentially affected parties.