




# Fordyce Lake Planning Unit: Map 1



-  PG&E Lands Preliminarily Designated for Donation
-  PG&E Lands Preliminarily Designated for Retention

-  Certain Considerations May Make Donation Inadvisable
-  FERC Boundary

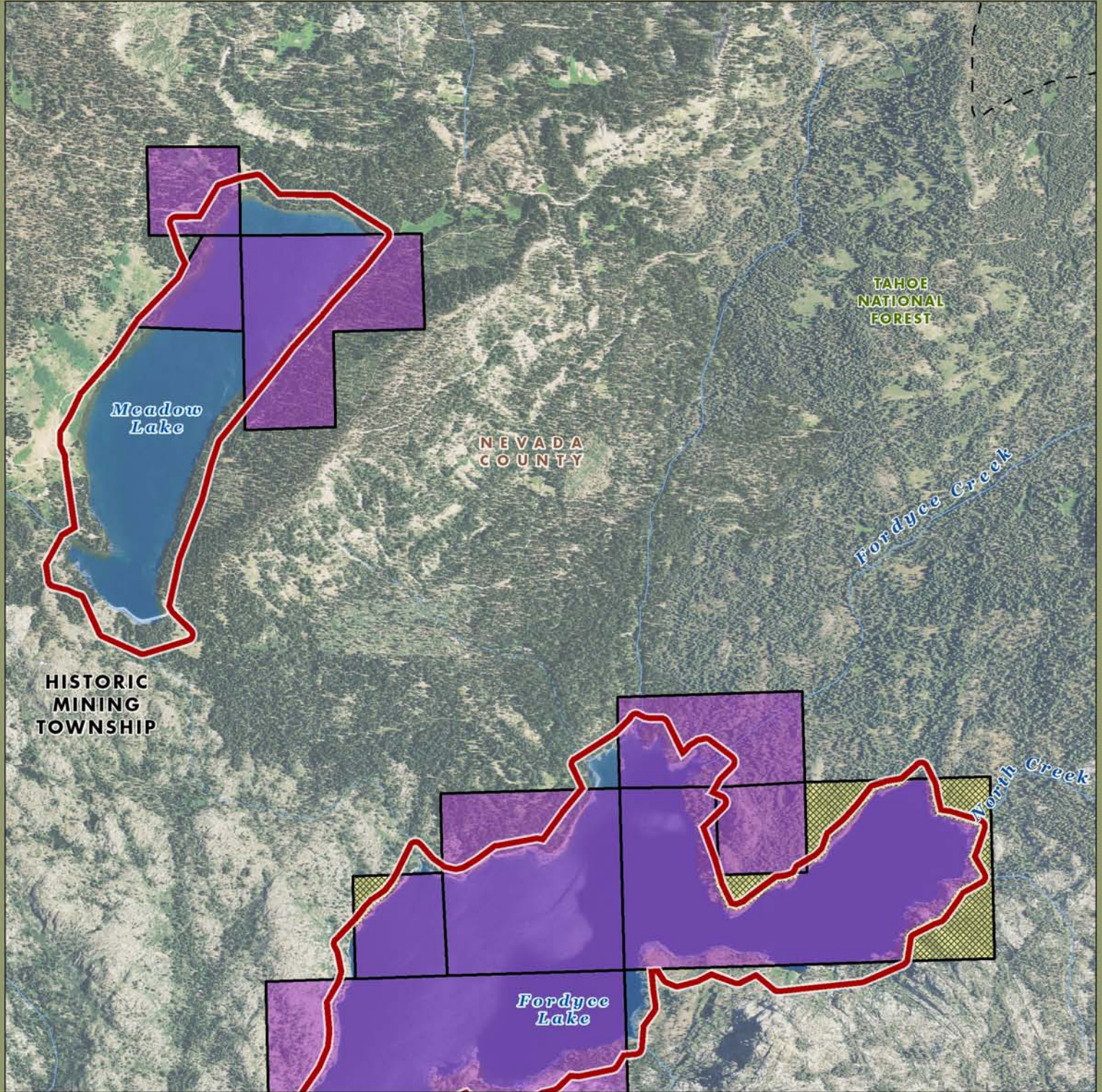
Imagery: NIAP 2009





Acreage and location of lands preliminarily designated for retention by PG&E outside the FERC boundary are approximate. FERC boundary is approximate and may change over time.





# Fordyce Lake Planning Unit: Map 2



 PG&E Lands Preliminarily Designated for Donation

 PG&E Lands Preliminarily Designated for Retention

 Certain Considerations May Make Donation Inadvisable

 FERC Boundary

Acreage and location of lands preliminarily designated for retention by PG&E outside the FERC boundary are approximate. FERC boundary is approximate and may change over time.

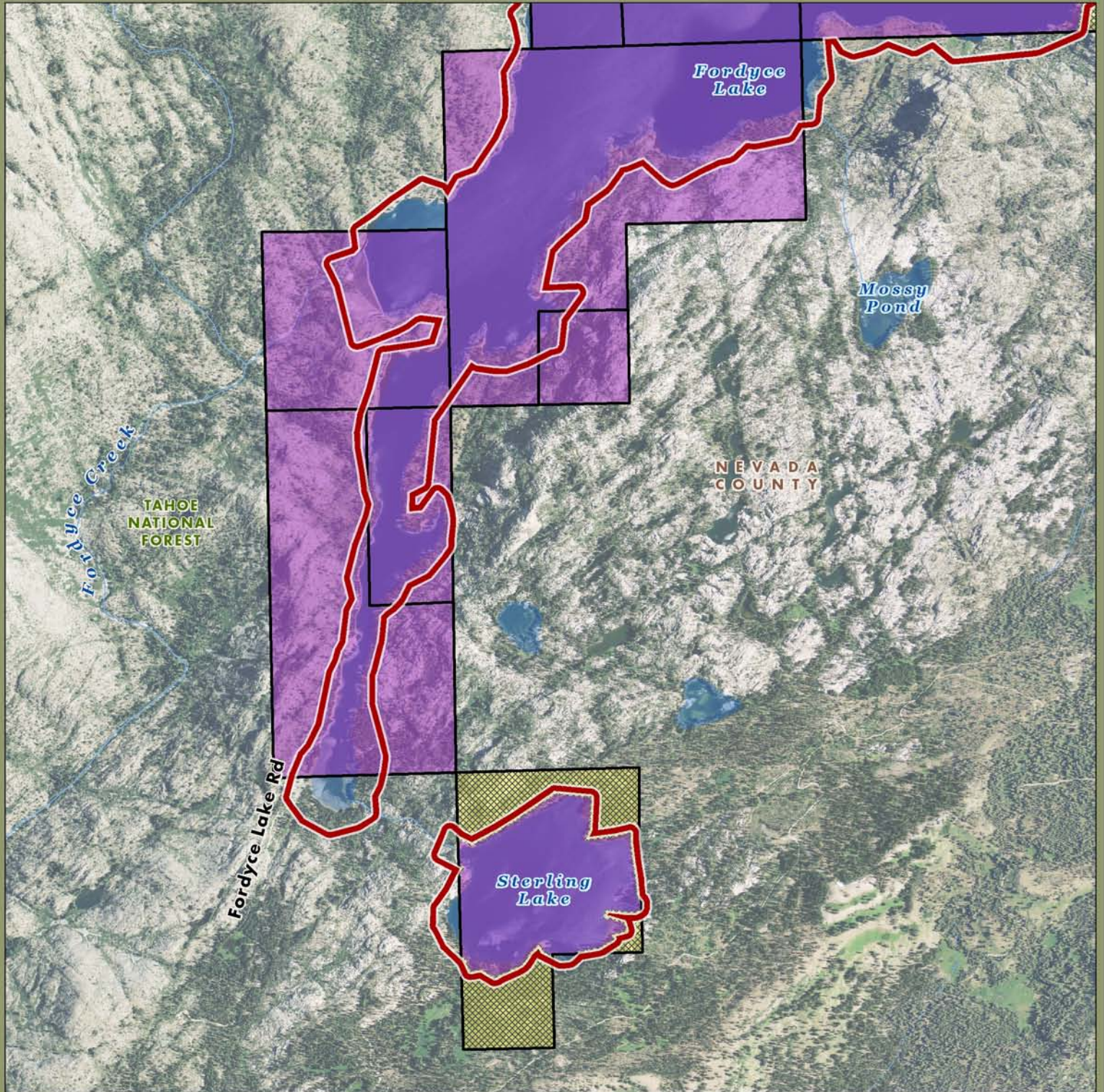






October 2010  
**AECOM**

Imagery: NIAP 2009



# Fordyce Lake Planning Unit: Map 3



-  PG&E Lands Preliminarily Designated for Donation
-  PG&E Lands Preliminarily Designated for Retention
-  Certain Considerations May Make Donation Inadvisable
-  FERC Boundary

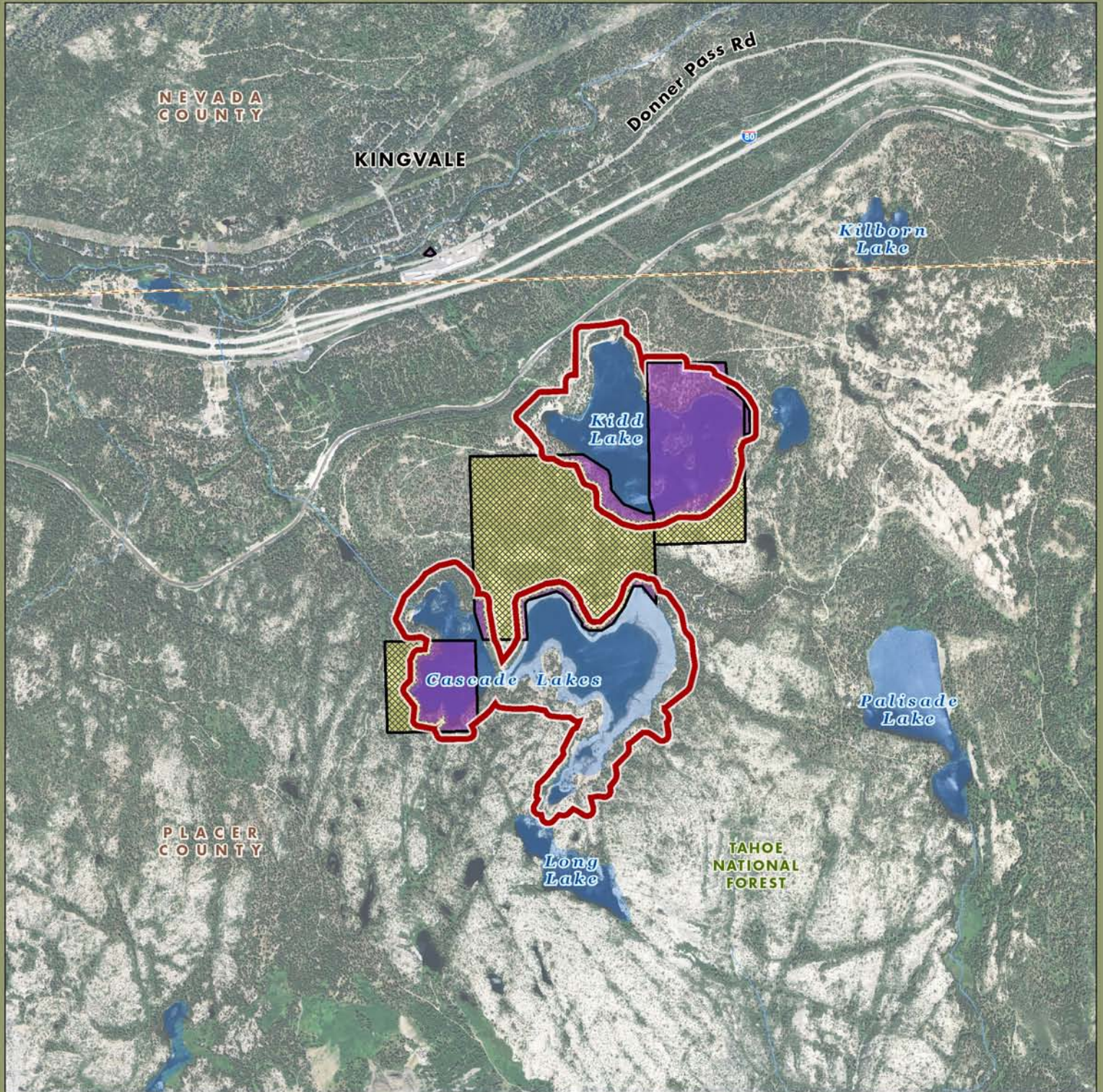
Acreage and location of lands preliminarily designated for retention by PG&E outside the FERC boundary are approximate. FERC boundary is approximate and may change over time.







Imagery: NIAP 2009



# Fordyce Lake Planning Unit: Map 4



- |  |  |
|--|--|
|  PG&E Lands Preliminarily Designated for Donation  |  Certain Considerations May Make Donation Inadvisable |
|  PG&E Lands Preliminarily Designated for Retention |  FERC Boundary  |

Imagery: NIAP 2009



Acreage and location of lands preliminarily designated for retention by PG&E outside the FERC boundary are approximate. FERC boundary is approximate and may change over time.

